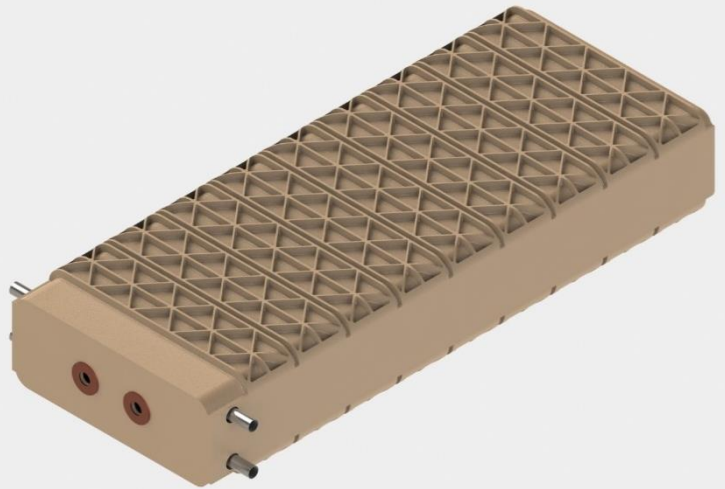
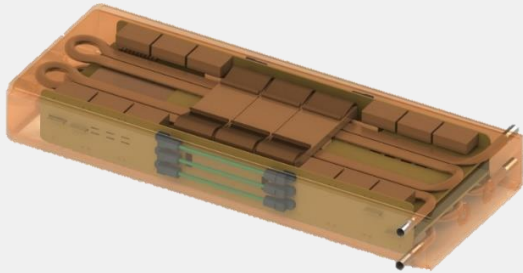


MPT150

150kW Isolated Transformer, AC-DC, DC-AC, DC-DC, AC-AC



High Efficiency

- Up to 99% efficient
- Resonant Design
- Reduces need for waste heat removal

Small & Low Cost

- Enables ~5MVA Solid State Transformers (SST)s
- Communications at Ground Potential

High Voltage Isolation

- Designed for 15kV medium voltage primary systems
- Compliant with global grid code
- Cooling water at ground potential

Modular

- Series connect primary side to achieve voltages up to 15kV
- Parallel modules to achieve higher current capability
- Water cooled

Type Designation	AC-DC	DC-AC	DC-DC	AC-AC
Primary				
Power (kVA)	150			
Maximum Working voltage	777VAC	1100VDC	1100VDC	777VAC
Current (A)	200			
Ground wall isolation - working	15kV			
Primary-secondary isolation - working	15kV			
Secondary				
Working voltage	10-1100VDC	10-777VAC	10-1100VDC	10-777VAC
Current (A)	200			
Ground wall isolation - working	2.2kV			
Efficiency				
Conversion Efficiency	98%	98%	99%	98%
Protection				
Basic Impulse Level (BIL)	110kV			
Control				
Communication	High bandwidth low latency interface - proprietary			
Control power	24VDC, tbdA			
General Data				
Dimensions (L,W,H) (mm)	395, 155, 70			
Weight (kg)	8			
Operating ambient temperature range	-40°C-80°C			
Cooling Water Temperature	-40°C-50°C			
Allowable relative humidity range	0%-100%			
Cooling method	Liquid Cooling: Water/Glycol - 80/20 to 50/50			
Max. operating altitude	4000m			